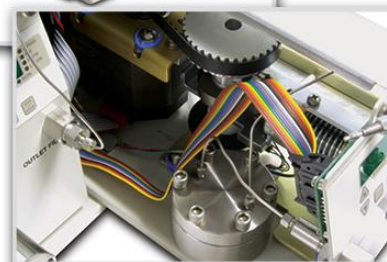


B2300 Binary Pump

Binary Gradient Pump for Advanced Applications



The B2300 is a binary gradient pump for advanced applications.



Meets the Most Demanding Applications

The B2300 series consists of two high-performance pumps, dual pulse dampers, and an offline pressure transducer.

Pump features:

- Fast & easy setup — 2 inlet connections from solvent reservoirs, outlet connection to injector
- Modular — can be added to any system
- All stainless or PEEK fluid path (pumps, valves, and fittings)
- Self-flushing pump heads for extended seal life and reduced maintenance
- Overpressure system shutdown to protect LC column
- Easily user-adjusted process set points (flow rate, pressure) via front keypads
- Digital readout of process parameters
- User-settable upper/lower pressure limits
- RS-232 interface
- USB Connectivity (integrated USB to RS-232 Solution)
- Compact size — 11 inches wide
- .001-5 mL/min or .01-10 mL/min flow ranges

Reduced Maintenance

Seal life is dramatically extended by actively flushing the back of the primary seal with a flushing solution. The result is less down-time and reduced operating expenses. The self-flush is automatic—just change the flushing fluid weekly. Seals can be changed in five minutes without tools.

New Easy Prime Heads

The B2300 Pump features a head design with the prime purge valve integrated into each fluid path. This insures the solvent is drawn from the reservoir even if the other pump is running.



Priming is in each head.

PSS1006-A-090711

B2300 Binary Pump

Binary Gradient Pump for Advanced Applications

Flexibility in Control

Binary gradient programming can be accomplished by a hand-held keypad unit, or by EZChrom SI data acquisition software.

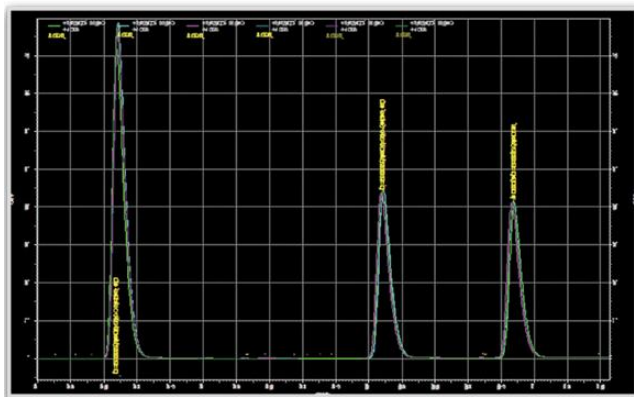
Performance and Reliability Beyond its Price

The use of digital stepper motor technology and the proven single-piston design gives the performance of the most expensive pumps at a fraction of their cost. The operating cost is lower too, due to the simplicity of the design and fewer number of parts required. It's so reliable it carries a three-year warranty.

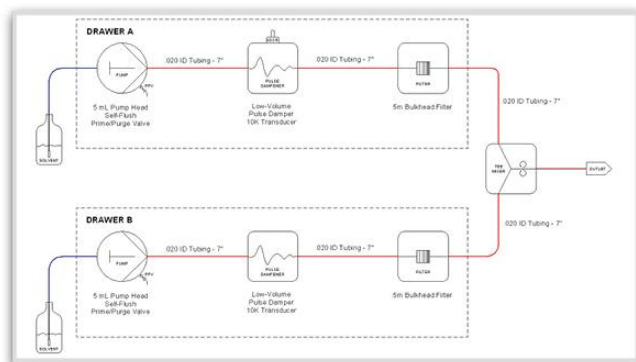
Reproducibility You Can Count On

The B2300 Pump gives reproducible gradients and chromatography due to its pulse free low volume fluid path.

The result of this simplicity and low dead volume is reproducibility that is seen in the chromatographic performance.



B2300 Reproducibility Study



B2300 Fluid Path

B2300 Binary Pump Specifications

Flow Rates001-5 mL/min.
Pressure	0 to 6,000 psi (SS heads) 0 to 5,000 psi (PEEK head)
Pressure Accuracy	±1% of full-scale pressure
Pressure Zero Offset	±2 psi
Flow Accuracy	±2% at flow rate of .2 mL/min. and above
Flow Precision	0.2% RSD
Features	Prime-purge valve Pulse damper Self-flushing pump head LED display
Environmental	Indoor use only
Altitude	2000 M
Temperature	10 to 30 C
Humidity	20 to 90% relative humidity
Remote Inputs	RS-232
Dimensions	8.7" H x 10.5" W x 18" D (22.1 x 26.7 x 45.7 cm)
Weight	24 pounds (11 kg)
Power	100/110 Volts ac; 220 Volts ac 50/60 Hz

Ordering Information

DESCRIPTION	PART No.
B2300 PUMP 0.001-5 mL/min, Self-Flush, Pulse Damper w/ Pressure - SS	B05SFD01
B2300 PUMP 0.001-5 mL/min, Self-Flush, Pulse Damper w/ Pressure - PEEK	B05PFD01
B2300 PUMP 0.01-10 mL/min, Self-Flush, Pulse Damper w/ Pressure - SS	B10SFD01
B2300 PUMP 0.01-10 mL/min, Self-Flush, Pulse Damper w/ Pressure - PEEK	B10PFD01

Choose at least one Control Option:

DESCRIPTION	PART No.
SCU-460 SYSTEM GRADIENT CONTROL UNIT	WID2K2021101
EZCHROM SI PUMP CONTROL & DATA ACQUISITION	*

(*Consult a Distributor for options.)

PSS1006-A-090711