

# SEPARATION OF SOLVENTS

Column: **Cronus WAX** P/N CG-402153

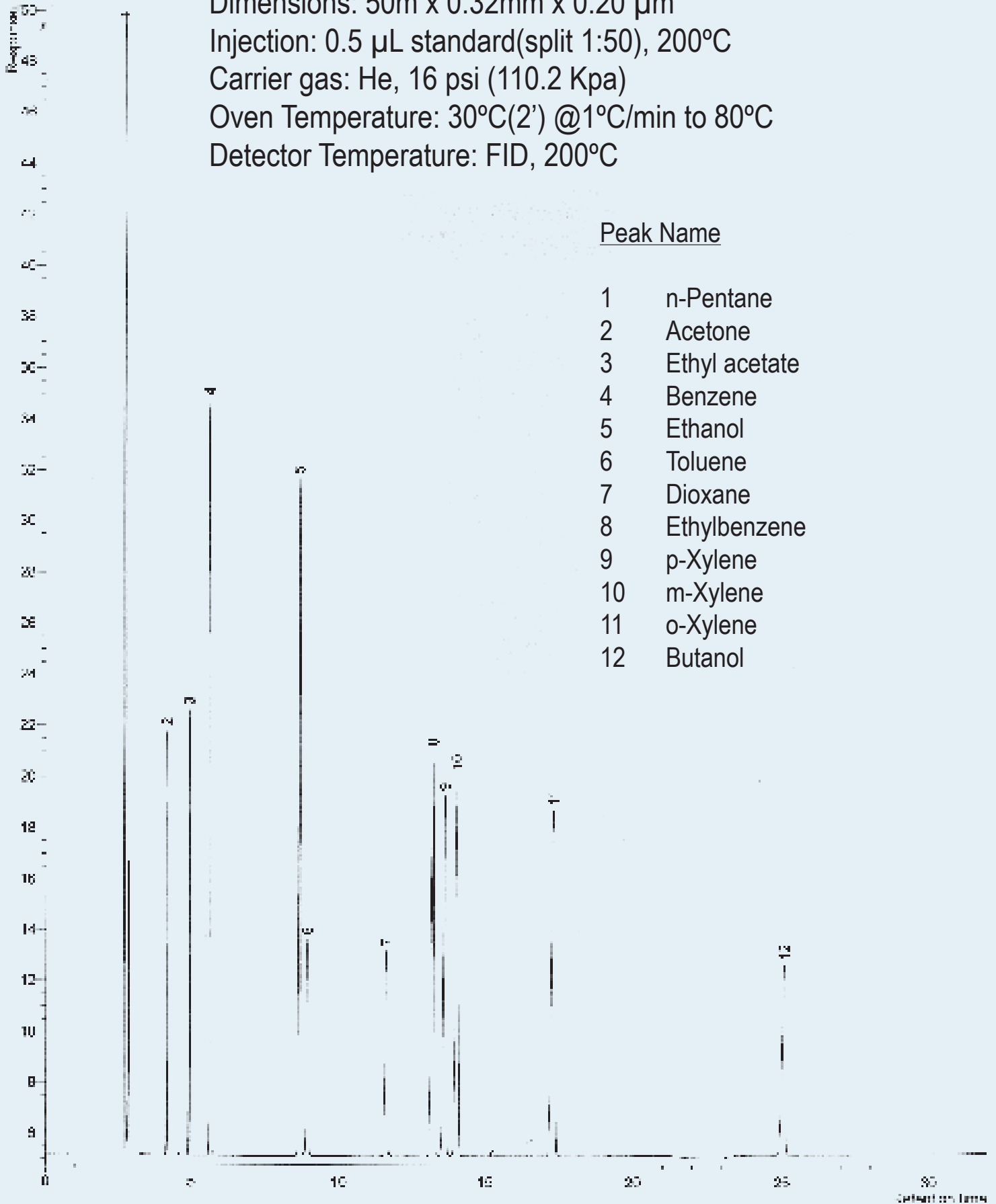
Dimensions: 50m x 0.32mm x 0.20  $\mu$ m

Injection: 0.5  $\mu$ L standard(split 1:50), 200°C

Carrier gas: He, 16 psi (110.2 Kpa)

Oven Temperature: 30°C(2') @1°C/min to 80°C

Detector Temperature: FID, 200°C



## Peak Name

- 1 n-Pentane
- 2 Acetone
- 3 Ethyl acetate
- 4 Benzene
- 5 Ethanol
- 6 Toluene
- 7 Dioxane
- 8 Ethylbenzene
- 9 p-Xylene
- 10 m-Xylene
- 11 o-Xylene
- 12 Butanol