

ANALYSIS OF SOIL AND SLUDGE OF A WATER-TREATMENT PLANT

Column: **CGB-5**, P/N CG-120233

Dimensions: 30m x 0.32mm x 0.25 µm

Injection: splitless 1 min

Carrier gas: He, 20 psi

Oven temperature: 65°C(1.2 min) @ 30°C/min to 90°C(1 min) @ 10°C/min to 300°C(15 min)

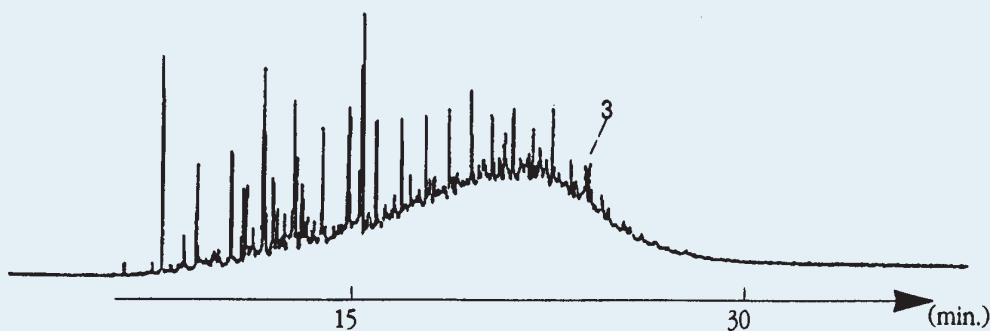
Detector: MS

Peak Name

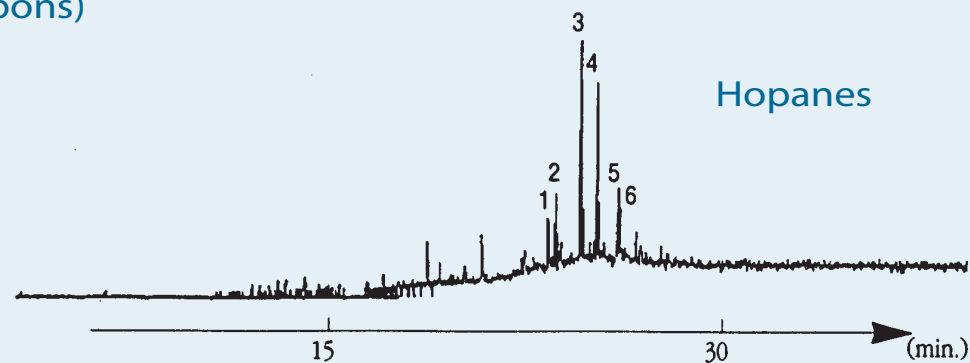
- 1- Tg
- 2- Tm
- 3- C29 ab
- 4- C30 ab
- 5- C31 ab (22S)
- 6- C31 ab (22R)

Chromatogram provided by T. Vaguero, L. Stronguiló and L. Comellas from CETS Institut Químic de Sarrià, Barcelona.

Sludge (Aliphatic Hydrocarbons)



Hopanes



Soil + Sludge (Aliphatic Hydrocarbons)

