

## PURIFIER SLUDGE ANALYSIS

Column: **Cronus X5** P/N TCG820232

Dimensions: 30m x 0.25mm x 0.25  $\mu$ m

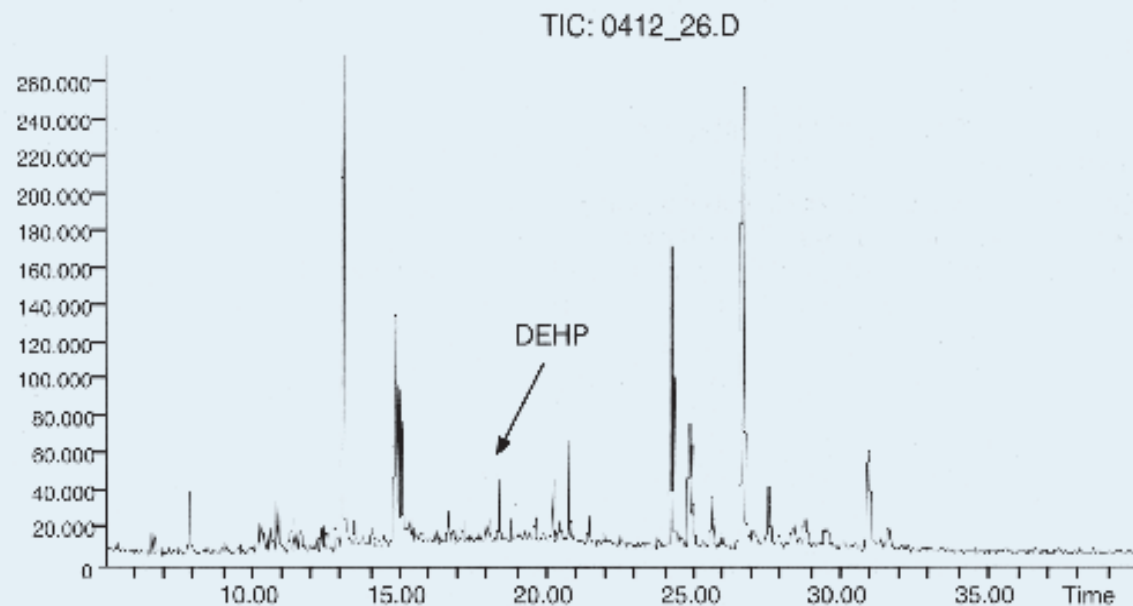
Injection: 2.0  $\mu$ l standard (split 1:50), 280°C

Carrier gas: He, 9 psi (62 kPa)

Oven temperature: 120°C (1min.) to 300°C (21min.) @ 10°C/min.

Detector: MS, full scan 50-550 amu, 280°C

Sample: Urban purifier sludge (250ppm di (2-ethylhexyl) phthalate, DEHP)



*Chromatogram from B. Bagó, J. Díaz. Chromatography Dep. IQS.*

