

EXTRACT OF ROSEMARY IN N-PENTANE

Column: **CGB-1**, P/N CG-110141

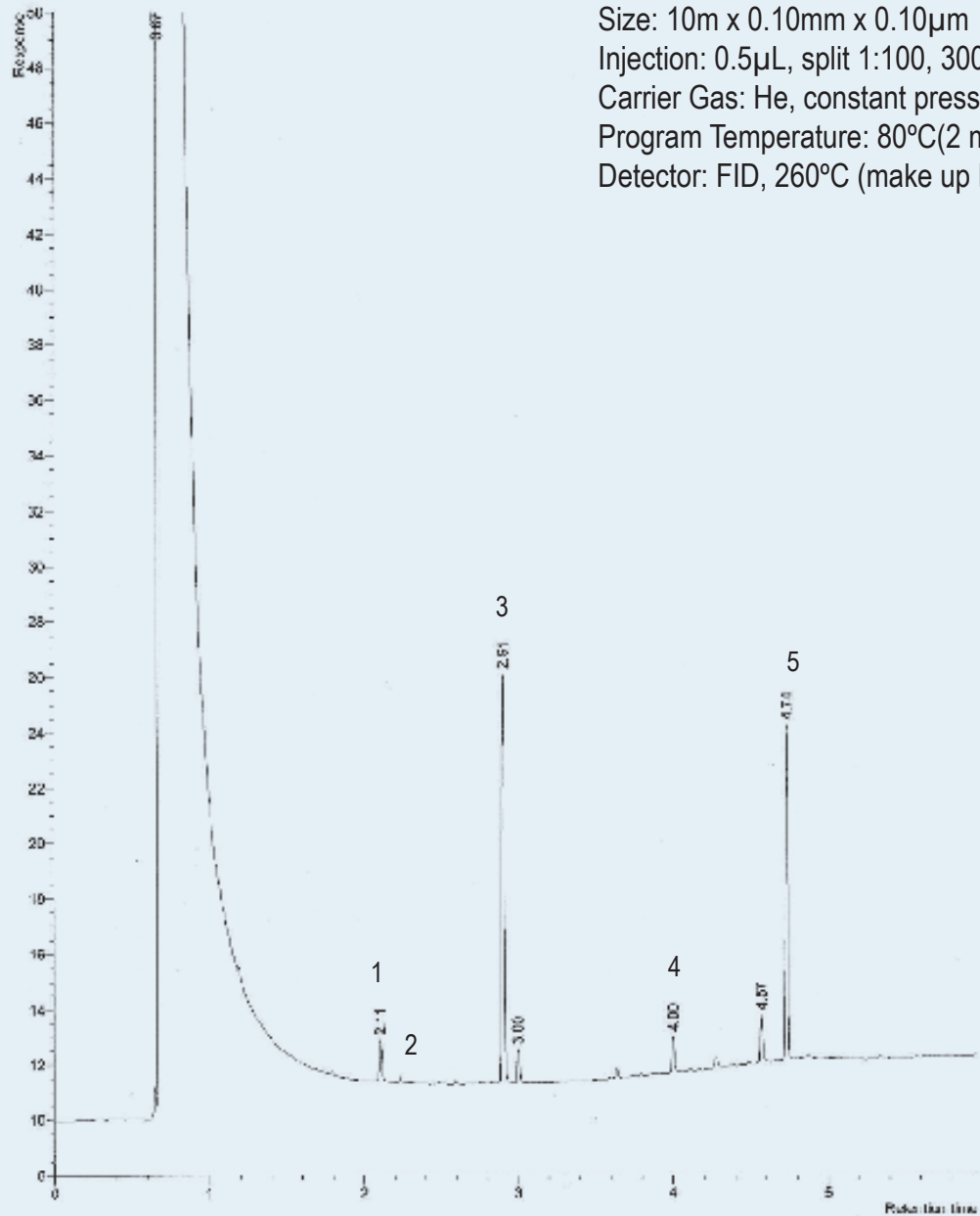
Size: 10m x 0.10mm x 0.10 μ m

Injection: 0.5 μ L, split 1:100, 300°C (liner 1mm)

Carrier Gas: He, constant pressure 35 psi (0.4mL/min)

Program Temperature: 80°C(2 min) @ 20°C/min to 250°C(5 min)

Detector: FID, 260°C (make up N2, 60 mL/min)



Peak Name

- 1 α -Pinene
- 2 Camphene
- 3 Eucalyptol
- 4 1,7,7-Tricamphor
- 5 Verbenone