

## SEPARATION OF PHTHALATES

Column: **Cronus X5**, 30m x 0.25mm x 0.25 $\mu$ m (P/N: CG-820232)

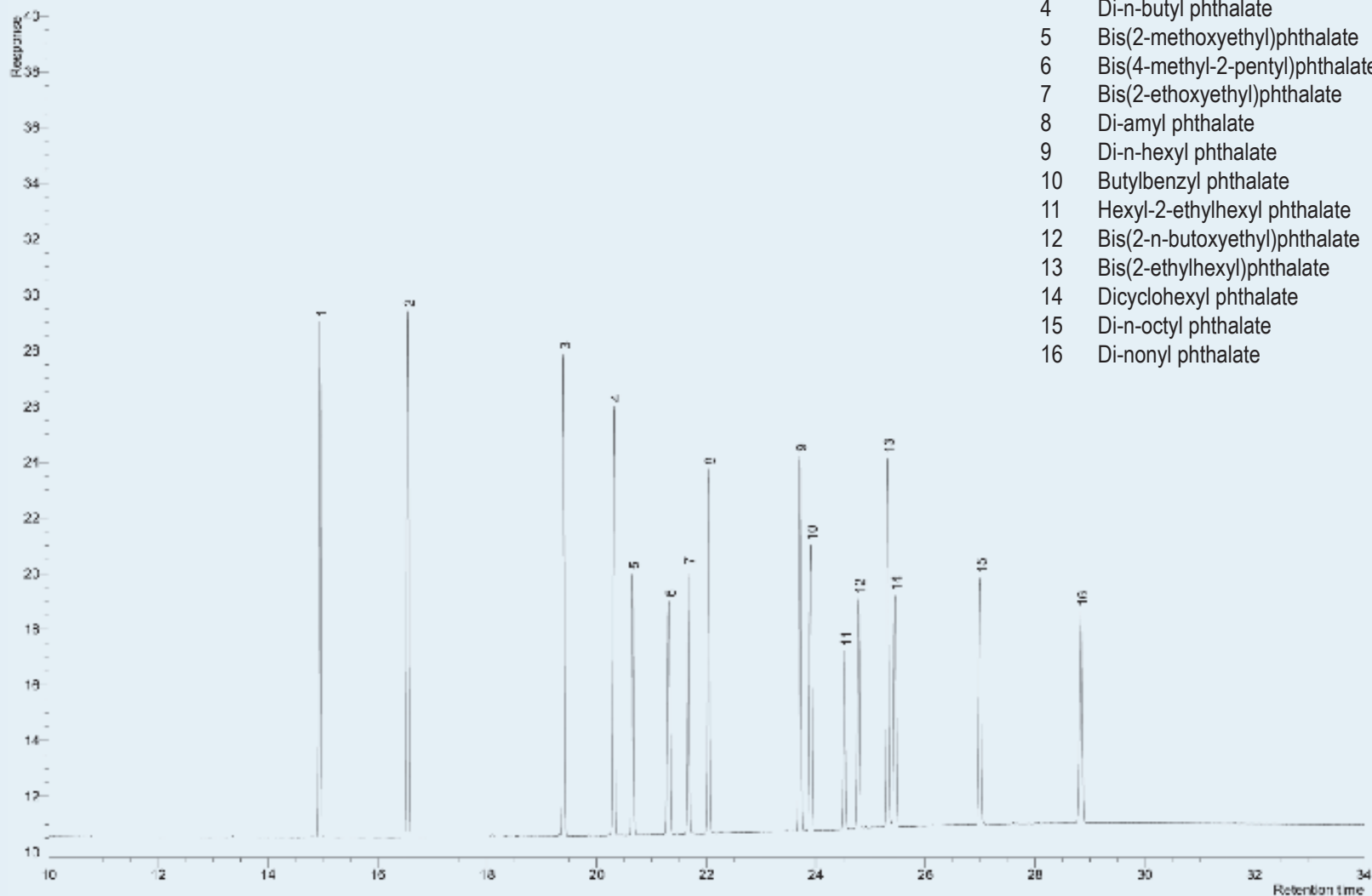
Carrier gas: Helium, 12psi, constant pressure mode

Injection: 250°C, split ratio 35:1

Oven temperature: 40°C (1min) to 325°C @ 12°C/min

Detector: FID, 330°C

Sample: 1 $\mu$ l Phthalate Ester Mix 1000 $\mu$ g/ml each compound



### Peak Name

- 1 Dimethyl phthalate
- 2 Diethyl phthalate
- 3 Diisobutyl phthalate
- 4 Di-n-butyl phthalate
- 5 Bis(2-methoxyethyl)phthalate
- 6 Bis(4-methyl-2-pentyl)phthalate isomers
- 7 Bis(2-ethoxyethyl)phthalate
- 8 Di-amyl phthalate
- 9 Di-n-hexyl phthalate
- 10 Butylbenzyl phthalate
- 11 Hexyl-2-ethylhexyl phthalate
- 12 Bis(2-n-butoxyethyl)phthalate
- 13 Bis(2-ethylhexyl)phthalate
- 14 Dicyclohexyl phthalate
- 15 Di-n-octyl phthalate
- 16 Di-nonyl phthalate