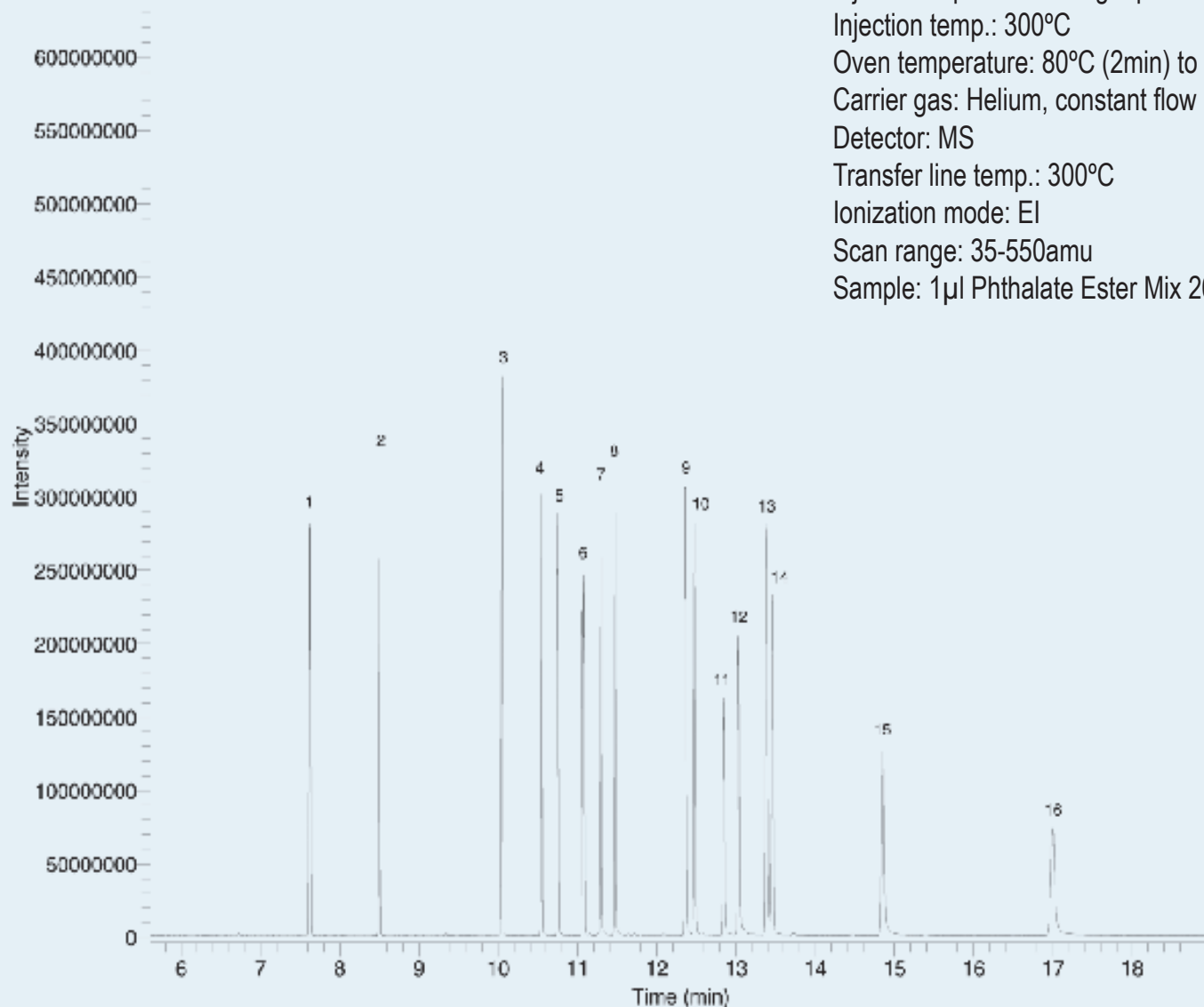


## SEPARATION OF PHTHALATES

Column: **Cronus X5**, 30m x 0.25mm x 0.25 $\mu$ m (P/N: CG-820232)  
Injection: Splitless w/Surge: pulse 20psi @ 0.30min, 25ml/min @ 1min  
Injection temp.: 300°C  
Oven temperature: 80°C (2min) to 280°C (8min) @ 20°C/min  
Carrier gas: Helium, constant flow @ 1.5ml/min  
Detector: MS  
Transfer line temp.: 300°C  
Ionization mode: EI  
Scan range: 35-550amu  
Sample: 1 $\mu$ l Phthalate Ester Mix 20ppm each compound



### Peak Name

- 1 Dimethyl phthalate
- 2 Diethyl phthalate
- 3 Diisobutyl phthalate
- 4 Di-n-butyl phthalate
- 5 Bis(2-methoxyethyl)phthalate
- 6 Bis(4-methyl-2-pentyl)phthalate isomers
- 7 Bis(2-ethoxyethyl)phthalate
- 8 Di-amyl phthalate
- 9 Di-n-hexyl phthalate
- 10 Butylbenzyl phthalate
- 11 Hexyl-2-ethylhexyl phthalate
- 12 Bis(2-n-butoxyethyl)phthalate
- 13 Bis(2-ethylhexyl)phthalate
- 14 Dicyclohexyl phthalate
- 15 Di-n-octyl phthalate
- 16 Di-nonyl phthalate