

PHENOL-ANISOL IN WINE (FAST CHROMATOGRAPHY)

Column: **Cronus X5** P/N CG-820441

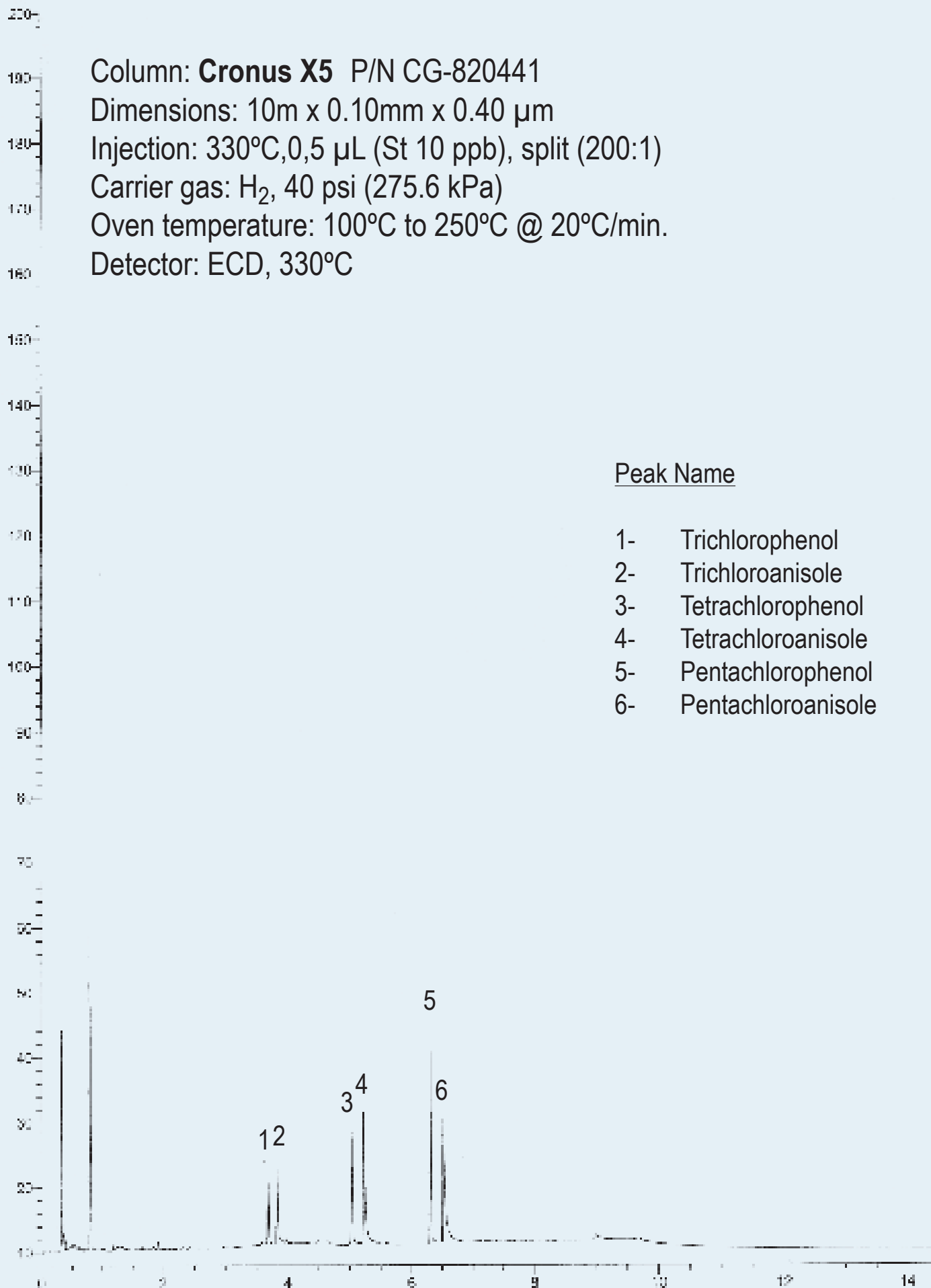
Dimensions: 10m x 0.10mm x 0.40 μ m

Injection: 330°C, 0,5 μ L (St 10 ppb), split (200:1)

Carrier gas: H₂, 40 psi (275.6 kPa)

Oven temperature: 100°C to 250°C @ 20°C/min.

Detector: ECD, 330°C



Peak Name

- 1- Trichlorophenol
- 2- Trichloroanisole
- 3- Tetrachlorophenol
- 4- Tetrachloroanisole
- 5- Pentachlorophenol
- 6- Pentachloroanisole