

PUFA II

Column: **CronusWax-280**, 15m x 0.10mm x 0.10 μ m (P/N: CG-830111)

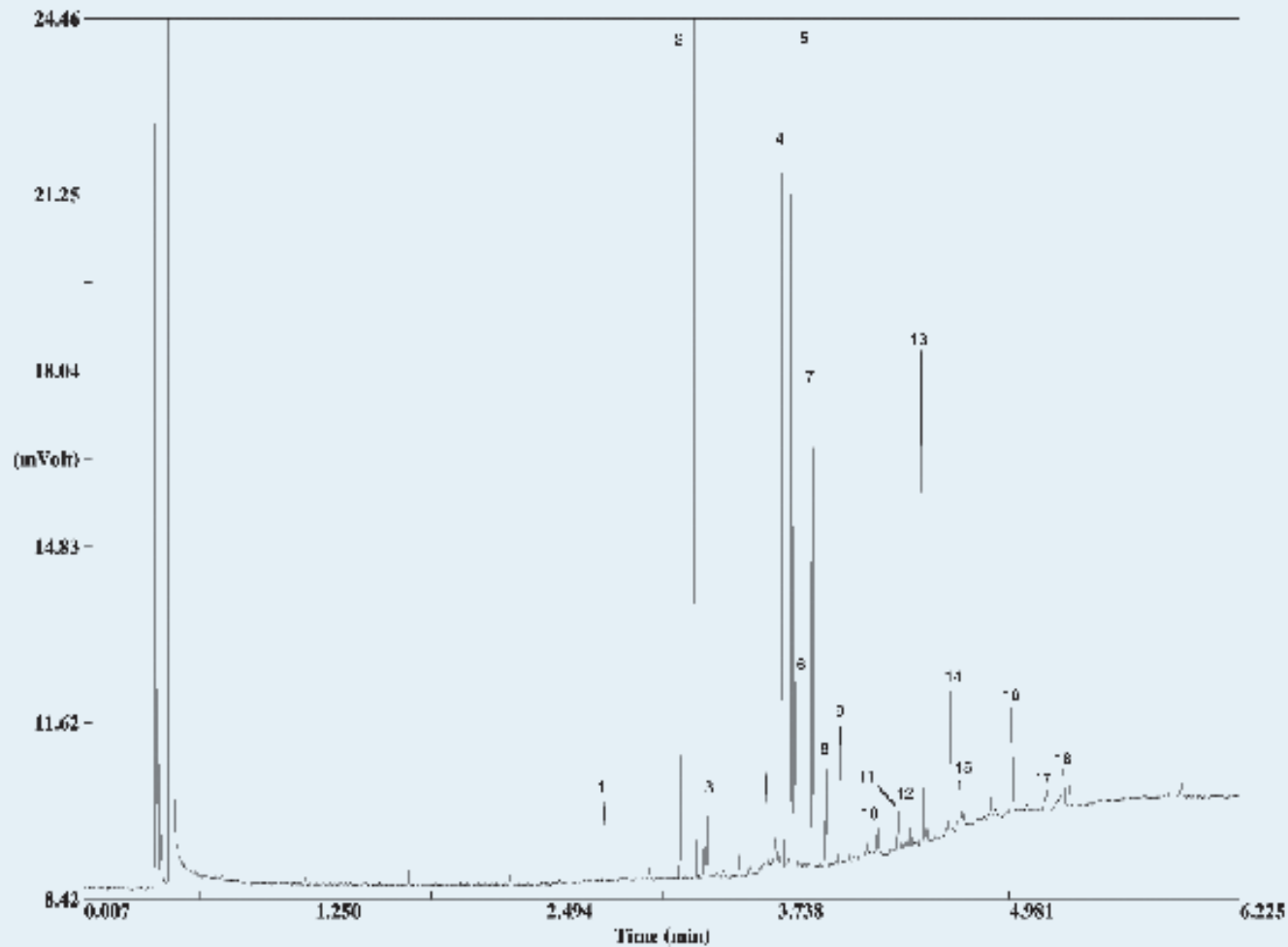
Injection: 280°C, split 200:1, precision liner

Detector: FID, 280°C

Carrier Gas: H₂, 45 psi (310.05 KPa)

Oven: 100°C (0.5min) @ 50°C/min to 280°C (2min)

Sample: 0.2 μ L PUFA II - Animal Source diluted to 50mg/ml in methylene chloride



Peak Name

1. C14:0
2. C16:0
3. C16:1v 7
4. C18:0
5. C18:1v 9
6. C18:1v 7
7. C18:2v 6
8. C18:3v 6
9. C18:3v 3
10. C20:1v 9
11. C20:2v 6
12. C20:3v 6
13. C20:4v 6
14. C20:5v 3
15. C22:1v 9
16. C22:4v 6
17. C22:5v 3
18. C24:1