

# PUFA I

Column: **CronusWax-280**, 15m x 0.10mm x 0.10 $\mu$ m (P/N: CG-830111)

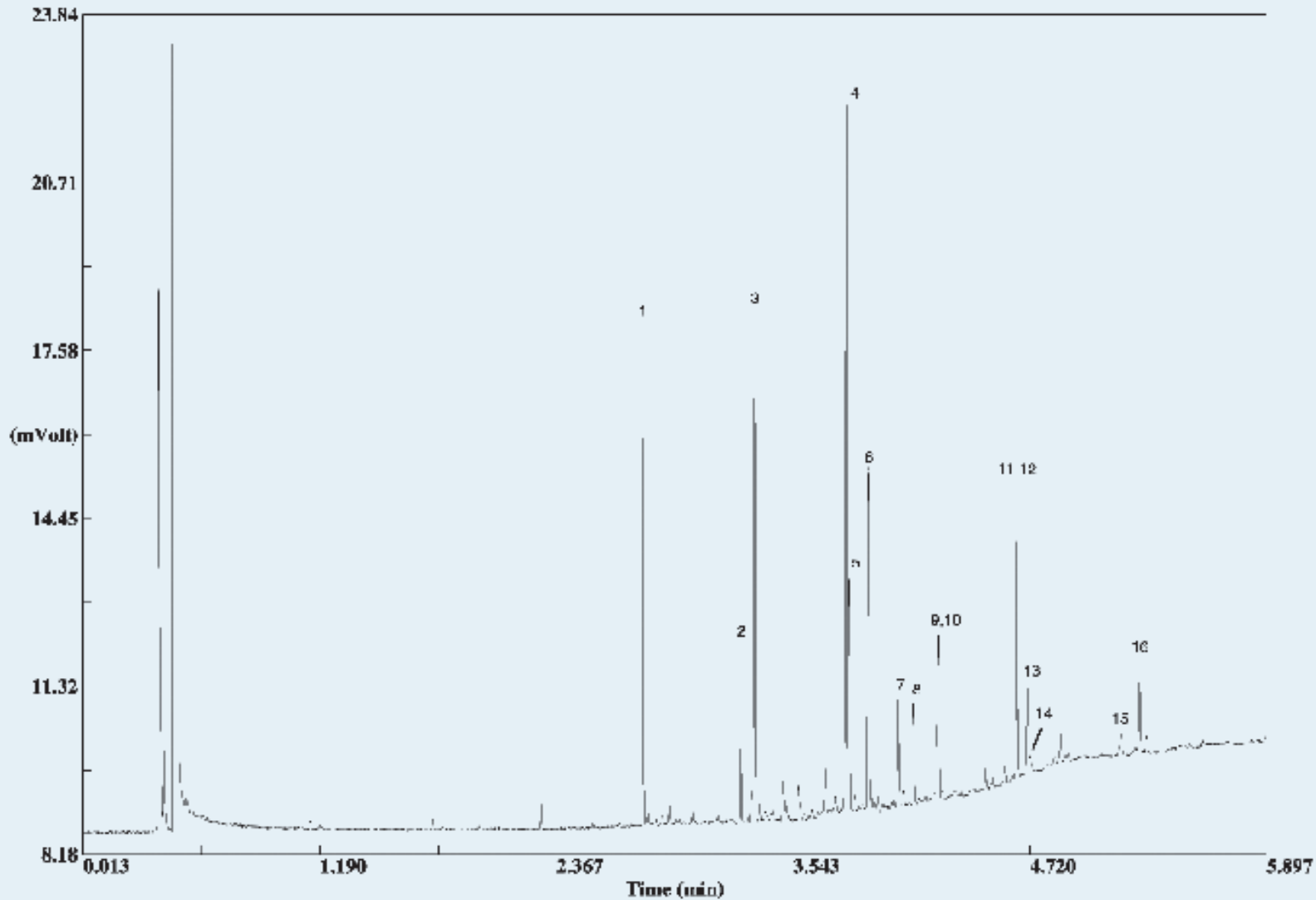
Injection: 280°C, split 200:1, precision liner

Detector: FID, 280°C

Carrier Gas: H<sub>2</sub>, 45 psi (310.05 KPa)

Oven: 100°C (0.5min) @ 50°C/min to 280°C (2min)

Sample: 0.2 $\mu$ L PUFA I - Marine Source diluted to 50mg/ml in methylene chloride



## Peak Name

1. C14:0
2. C16:0
3. C16:1v 7
4. C18:1v 9
5. C18:1v 7
6. C18:2v 6
7. C18:3v 3
8. C18:4v 3
9. C20:1v 9
10. C20:1v 11
11. C20:4v 3
12. C20:5v 3
13. C22:1v 11
14. C22:1v 9
15. C22:5v 3
16. C22:6v 3