

SEPARATION OF MONOMERS IN PAINTS

Column: **Cronus WAX** P/N CG-811035

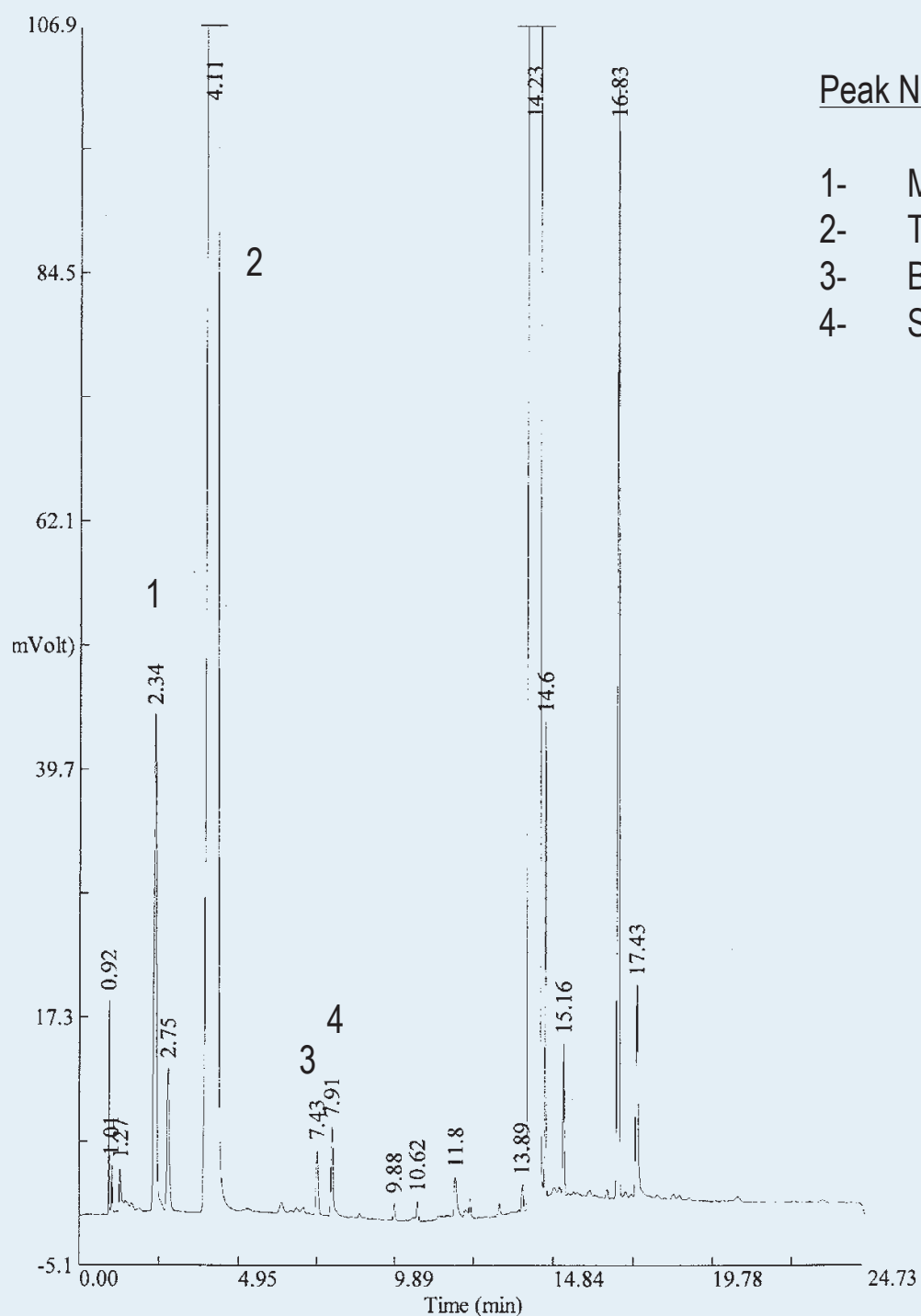
Dimensions: 30m x 0.53mm x 1.0 μ m

Injection: 1 μ L Monomers mixture (20ppm, 100ppm toluene in DMSO), split 1:50, 240°C

Carrier gas: He, 4 psi (27.6 KPa)

Oven temperature: 40°C(5min) @ 15°C/min to 180°C(15min)

Detector: FID, 240°C



Peak Name

- 1- Methyl acrylate
- 2- Toluene
- 3- Butyl acrylate
- 4- Styrene