

METHANOL AND HIGHER ALCOHOLS

Column: **CGB-624**, P/N CG-601432

Size: 30m x 0.25mm x 1.4 μ m

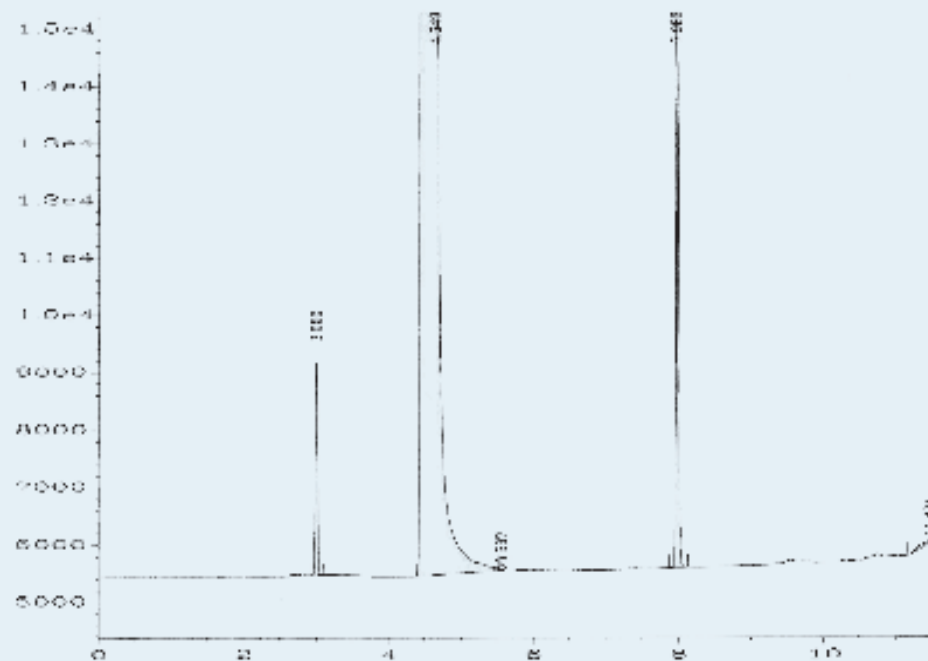
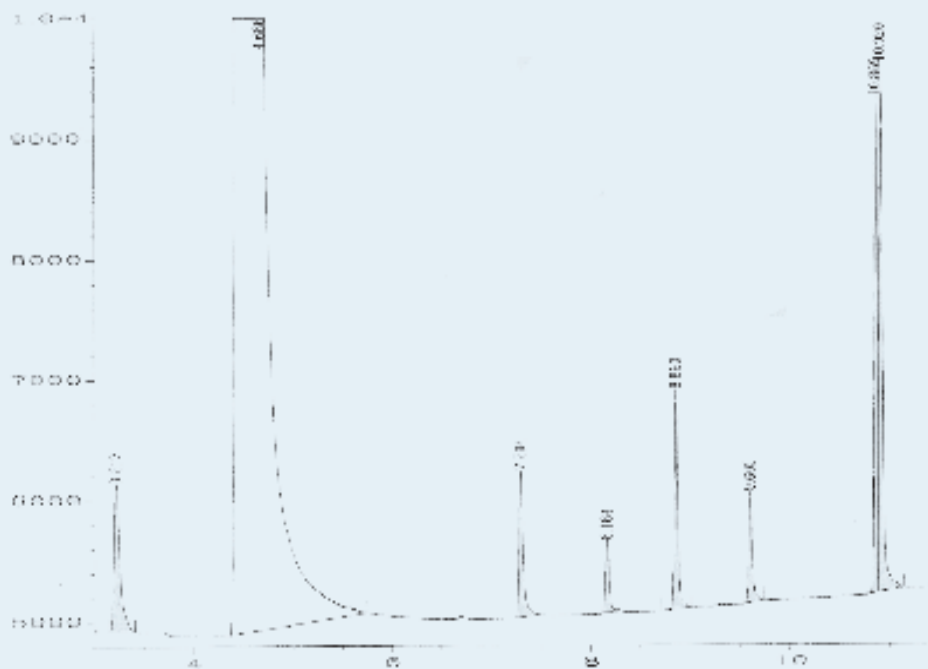
Injection: 1 μ L split 1:50, 250 $^{\circ}$ C

Carrier gas: He, 1mL/min

Program temperature: 40 $^{\circ}$ C (5min) @ 20 $^{\circ}$ C/min to 200 $^{\circ}$ C (3min)

Detector: FID, 260 $^{\circ}$ C

RT (min)	Peak Name
3.21	Methanol
4.66	Ethanol
7.29	1-Propanol
8.16	2-Butanol
8.86	Isobutanol
9.60	1-Butanol
10.87	Isoamyl alcohol
10.92	Isoamyl alcohol



Chromatogram provided by Joan Garcia from INCAVI (Vilafranca del Penedés, Barcelona)