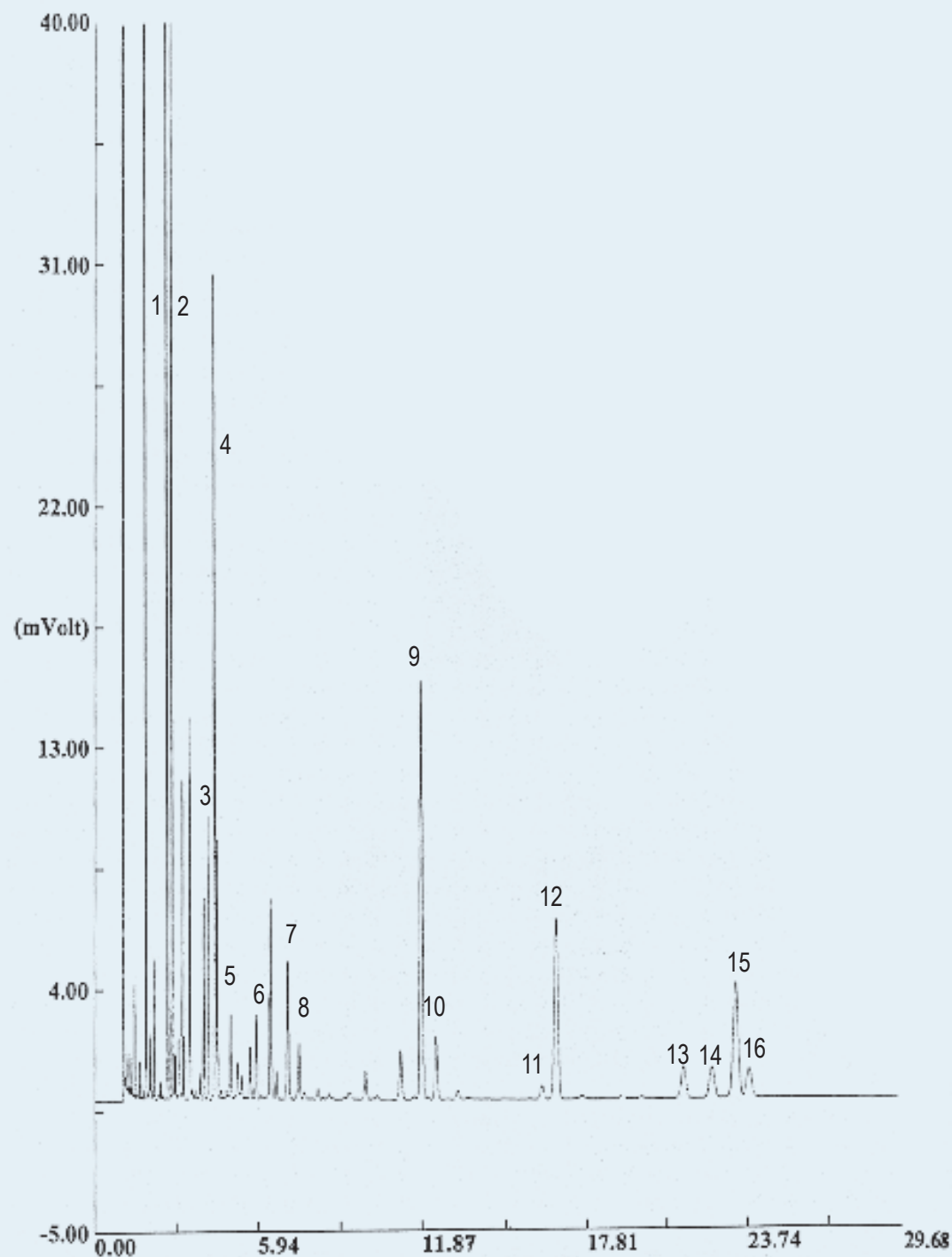


SEPARATION OF FAMES

Column: **CG-WAXOmega**, P/N CG-840233
Dimensions: 30m x 0.32mm x 0.25 μ m
Injection: 1 μ L test SP-4-8476, split 1:90, 250°C
Carrier gas: H₂, 9.5 psi (65.4 KPa)
Oven temperature: 200°C (Isothermal)
Detector: FID, 260°C



Peak Name

- 1- C14:0
- 2- C16:0
- 3- C18:0
- 4- C18:1n9
- 5- C18:1n7
- 6- C18:2n6
- 7- C18:4n3
- 8- C20:0
- 9- C20:5n3 (EPA)
- 10- C22:0
- 11- C21:5n3
- 12- C23:0
- 13- C22:5n3
- 14- C24:0
- 15- C22:6n3 (DHA)
- 16- C24:1n9