

## ESSENTIAL OIL

Column: **CGB-WAX**, P/N CG-140262

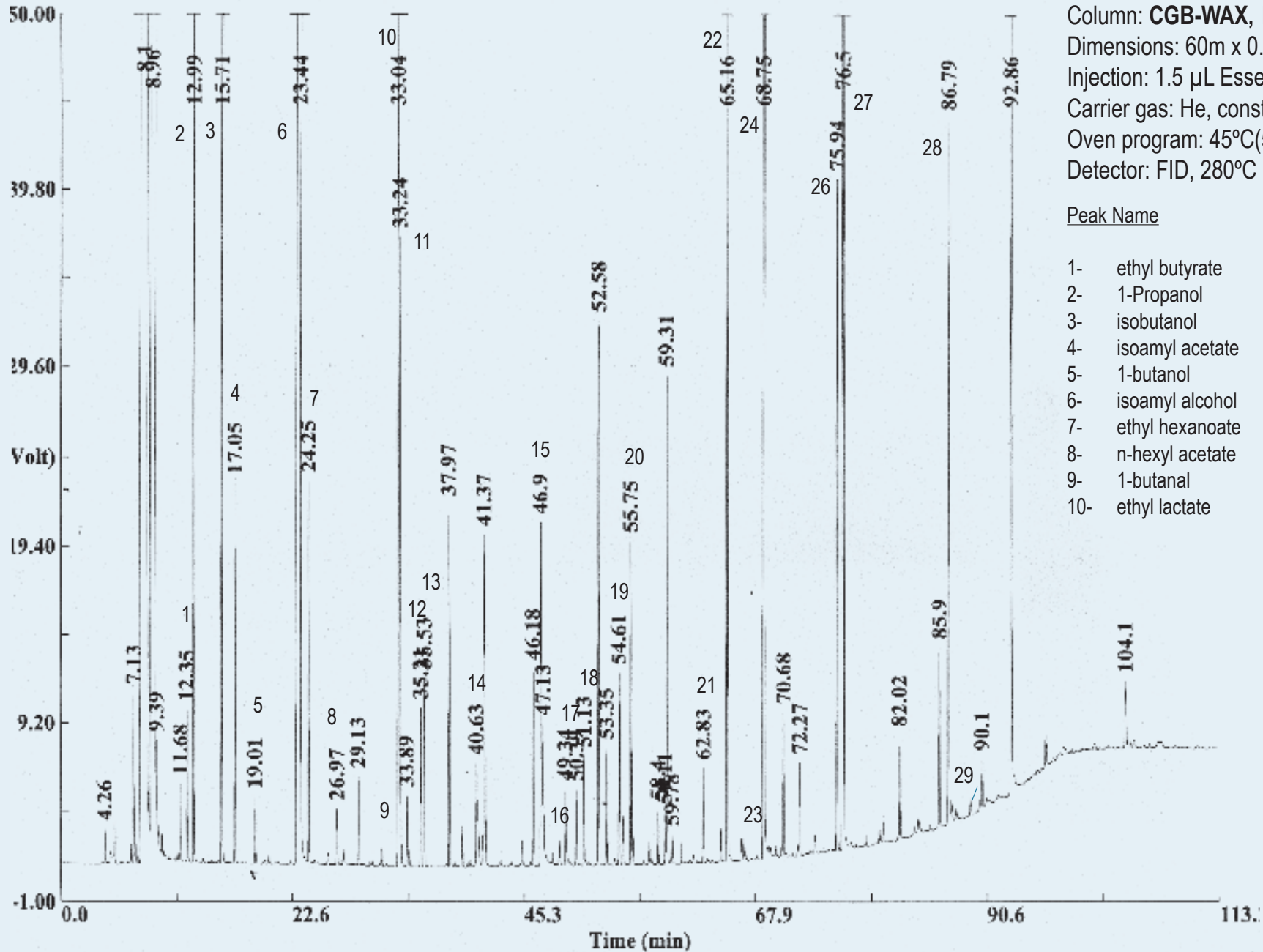
Dimensions: 60m x 0.25mm x 0.25  $\mu$ m

Injection: 1.5  $\mu$ L Essential oil, splitless 0.5min, 250°C

Carrier gas: He, constant pressure 26 psi (180 KPa).

Oven program: 45°C(5min) @ 2°C/min to 230°C(15min)

Detector: FID, 280°C



### Peak Name

- |                    |                          |
|--------------------|--------------------------|
| 1- ethyl butyrate  | 11- 1-hexanol            |
| 2- 1-Propanol      | 12- 3-ethoxy-1-propanol  |
| 3- isobutanol      | 13- cis-3-hexenol        |
| 4- isoamyl acetate | 14- furfural             |
| 5- 1-butanol       | 15- propionic acid       |
| 6- isoamyl alcohol | 16- isobutyric acid      |
| 7- ethyl hexanoate | 17- methyl furfural      |
| 8- n-hexyl acetate | 18- butyric acid         |
| 9- 1-butanol       | 19- diethyl succinate    |
| 10- ethyl lactate  | 20- a-terpineol          |
|                    | 21- phenyl ethyl acetate |
|                    | 22- hexanoic acid        |
|                    | 23- geraniol             |
|                    | 24- phenyl ethanol       |
|                    | 25- enantic acid         |
|                    | 26- 4-ethyl guaiacol     |
|                    | 27- octanoic acid        |
|                    | 28- decanoic acid        |
|                    | 29- ethyl palmitate      |