

EPA 601/602 PURGEABLE HALOCARBONS MIX PLUS 2-CHLOROETHYL VINYL ETHER

Column: **CGB-624**, P/N CG-601462

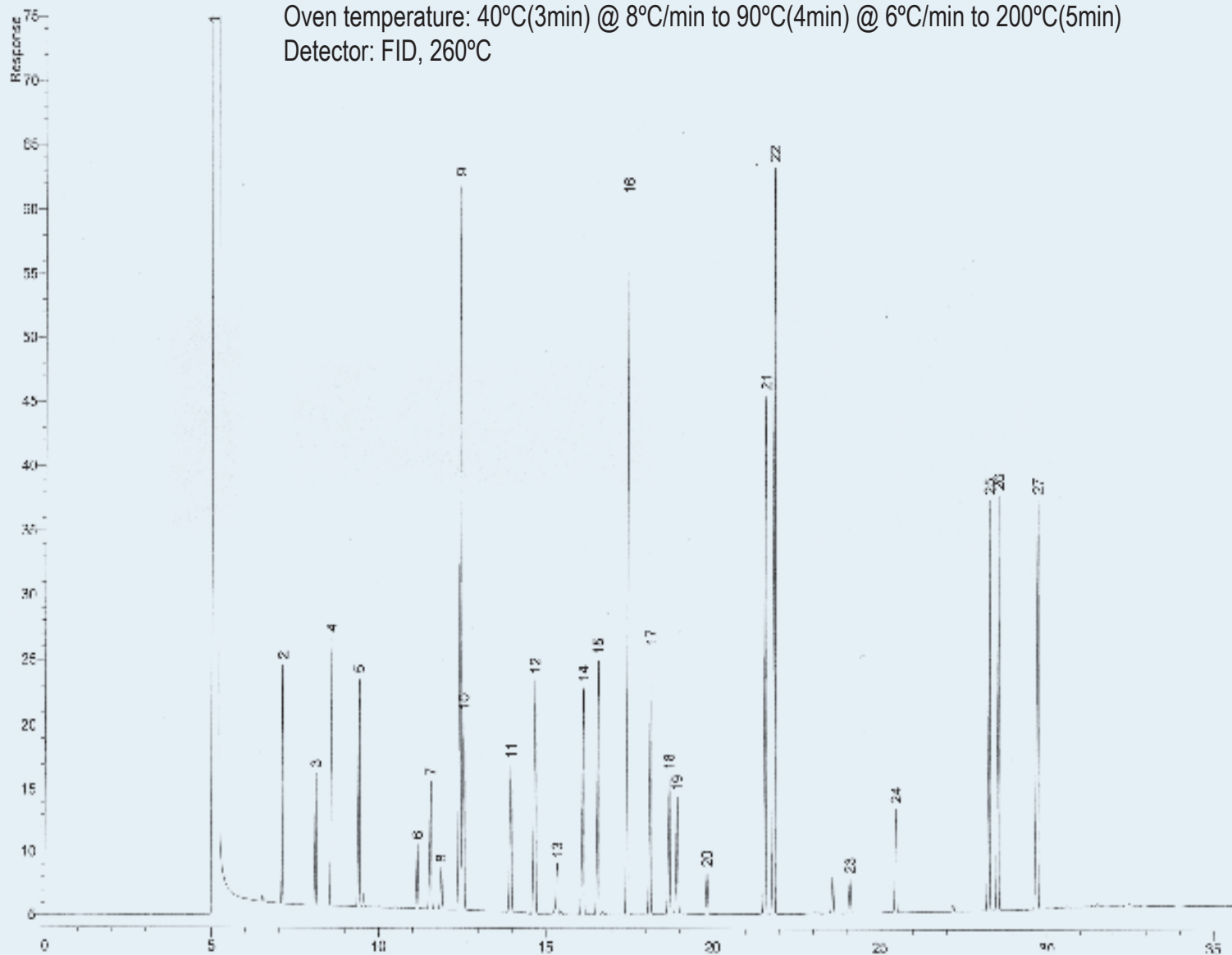
Dimensions: 60m x 0.25mm x 1.4 μ m

Injection: 0.5 μ L EPA 601/602 Purgeable Halocarbons Mix (2000 ng/mL), split 1:50, 260°C

Carrier gas: He 30cm/s, constant pressure 35 psi (241.15 KPa)

Oven temperature: 40°C(3min) @ 8°C/min to 90°C(4min) @ 6°C/min to 200°C(5min)

Detector: FID, 260°C



Peak Name

- 1- Methanol
- 2- 1,1-Dichloroethylene
- 3- Methylene chloride
- 4- trans-1,2-Dichloroethylene
- 5- 1,1-Dichloroethane
- 6- Chloroform
- 7- 1,1,1-Trichloroethane
- 8- Carbon Tetrachloride
- 9- Benzene
- 10- 1,2-Dichloroethane
- 11- Trichloroethylene
- 12- 1,2-Dichloropropane
- 13- Bromodichloromethane
- 14- 2-Chloroethyl vinyl ether
- 15- cis-1,3-Dichloropropene
- 16- Toluene
- 17- trans-1,3-Dichloropropene
- 18- 1,1,2-Trichloroethane
- 19- Tetrachloroethylene
- 20- Dibromochloromethane
- 21- Chlorobenzene
- 22- Ethylbenzene
- 23- Bromoform
- 24- 1,1,2,2-Tetrachloroethane
- 25- 1,3-Dichlorobenzene
- 26- 1,4-Dichlorobenzene
- 27- 1,2-Dichlorobenzene