

# CHLOROFORM IMPURITIES

Column: **Cronus VOC**, P/N CG-943035

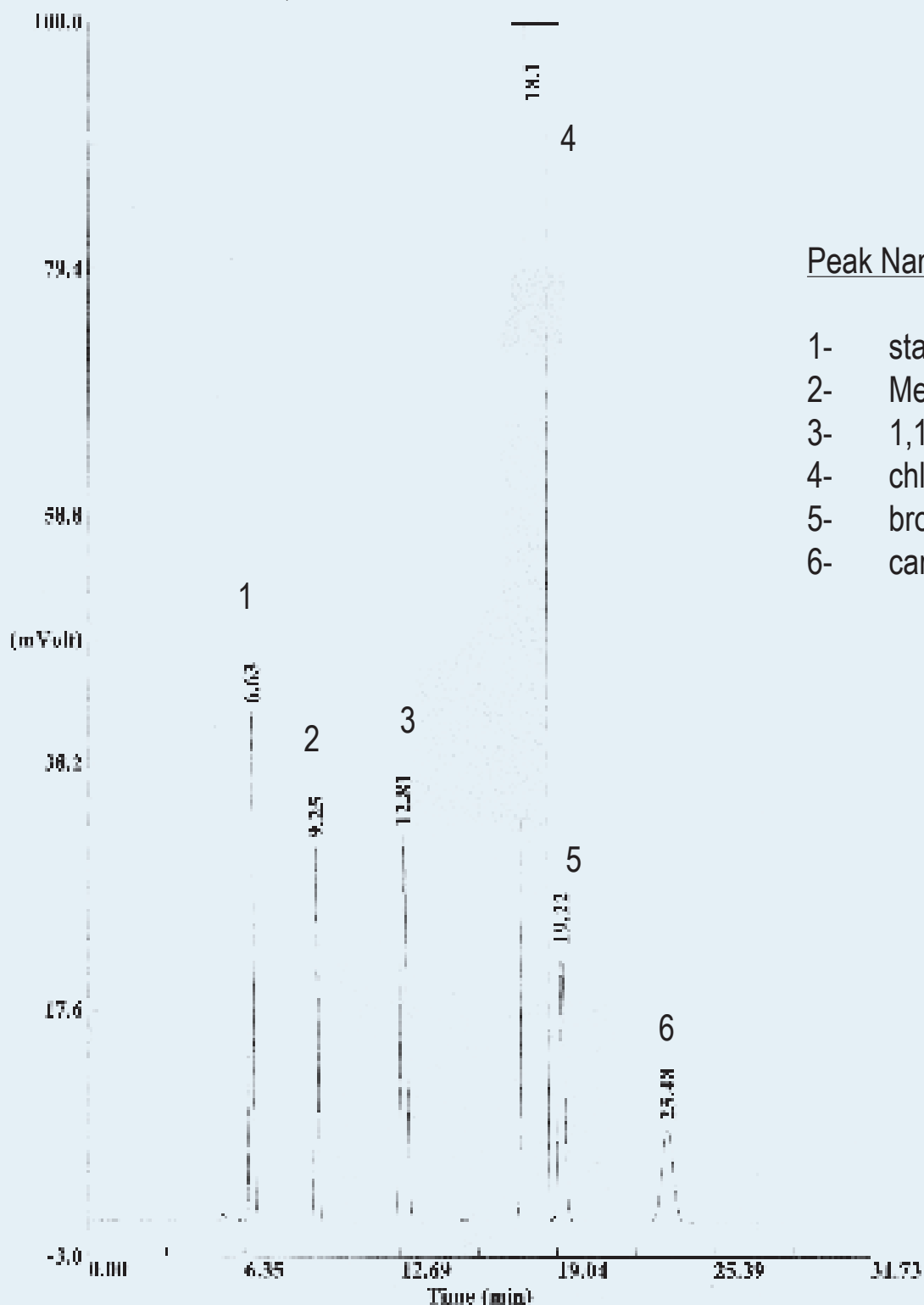
Dimensions: 30m x 0.53mm x 3.0  $\mu$ m

Injection: 1  $\mu$ l chloroform, split, 5:1, 150°C

Carrier gas: He, constant pressure 2 psi (13.8 KPa), 19.53 cm/s (30°C)

Oven program: 30°C (isothermal)

Detector: FID, 200°C



## Peak Name

- 1- stabilizer
- 2- Methylene chloride
- 3- 1,1 Dichloroethane
- 4- chloroform
- 5- bromochloromethane
- 6- carbon tetrachloride