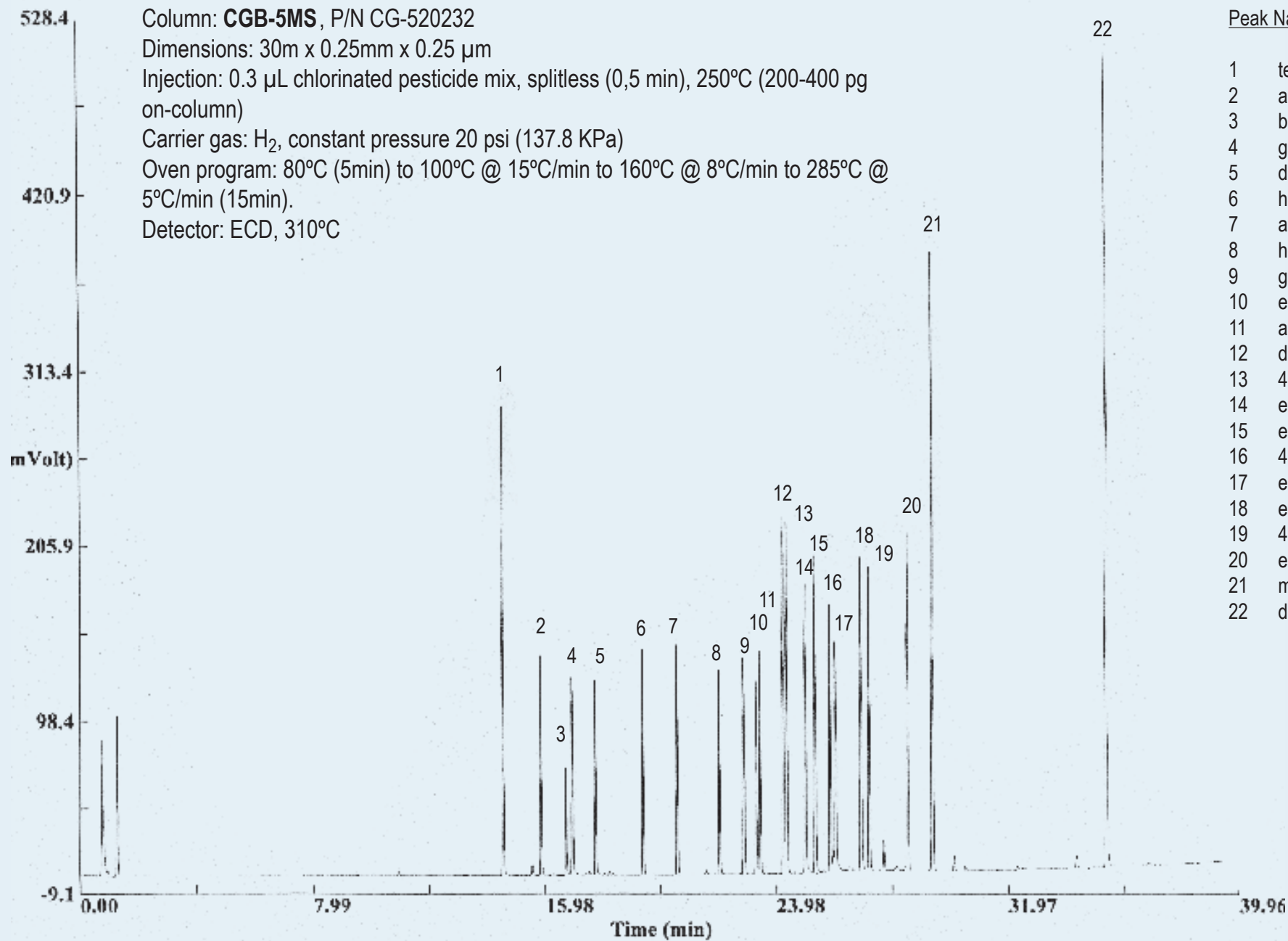


# CHLORINATED PESTICIDES

Column: **CGB-5MS**, P/N CG-520232  
 Dimensions: 30m x 0.25mm x 0.25 µm  
 Injection: 0.3 µL chlorinated pesticide mix, splitless (0,5 min), 250°C (200-400 pg on-column)  
 Carrier gas: H<sub>2</sub>, constant pressure 20 psi (137.8 KPa)  
 Oven program: 80°C (5min) to 100°C @ 15°C/min to 160°C @ 8°C/min to 285°C @ 5°C/min (15min).  
 Detector: ECD, 310°C



Peak Number	Peak Name
1	tetrachloro-m-xylene
2	alpha-BHC
3	beta-BHC
4	gamma-BHC
5	delta-BHC
6	heptachlor
7	aldrin
8	heptachlor epoxide
9	gamma-chlordane
10	endosulfan I
11	alpha-chlordane
12	dieldrin
13	4,4'-DDE
14	endrin
15	endosulfan II
16	4,4'-DDD
17	endrin aldehyde
18	endosulfan sulfate
19	4,4'-DDT
20	endrin ketone
21	methoxychlor
22	decachlorobiphenyl