

AMINES

Column: **CGB-WAX.DB**, P/N CG-931035

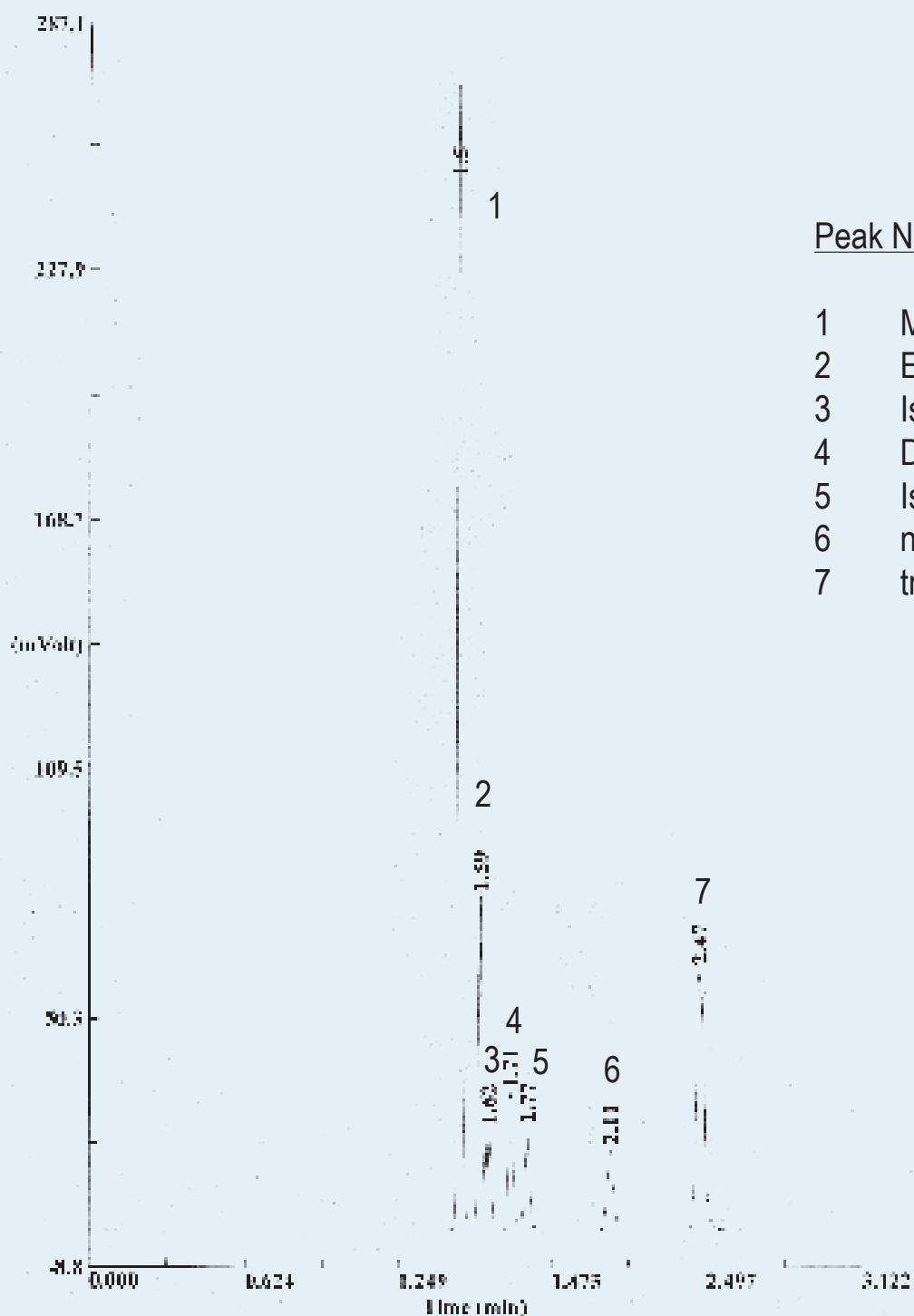
Dimensions: 30m x 0.53mm x 1.0 μ m

Injection: 1 μ L Amines mixture, Head Space, split 1:50, 260°C

Carrier gas: H₂, constant pressure 1.8 psi (12.40Kpa)

Oven temperature: 60°C

Detector: FID, 280°C



Peak Name

- | | |
|---|----------------|
| 1 | Methylamine |
| 2 | Ethylamine |
| 3 | Isopropylamine |
| 4 | Diethylamine |
| 5 | Isobutylamine |
| 6 | n-Butylamine |
| 7 | triethylamine |