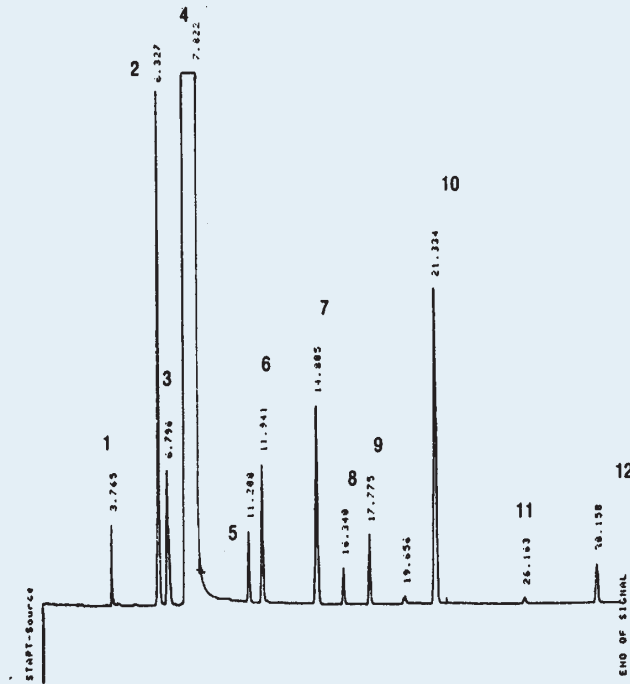


## SEPARATION OF VOLATILES IN ALCOHOLIC BEVERAGES

Column: **CGB-WAX**, P/N CG-141035  
 Dimensions: 30m x 0.53mm x 1.0  $\mu$ m  
 Injection: 0.3  $\mu$ L standard, direct injection (injector of packed columns)  
 Carrier gas: N<sub>2</sub>, 4.5 mL/min  
 Oven temperature: 40°C @ 2°C/min to 110°C  
 Detector: FID, 250°C



### Peak Name

- 1- Acetaldehyde
- 2- Ethyl acetate
- 3- Methanol
- 4- Ethanol
- 5- 2-Butanol
- 6- 1-Propanol
- 7- Isobutanol
- 8- Allyl alcohol
- 9- 1-Butanol
- 10- Isoamyl alcohols
- 11- Acetoin
- 12- Ethyl lactate

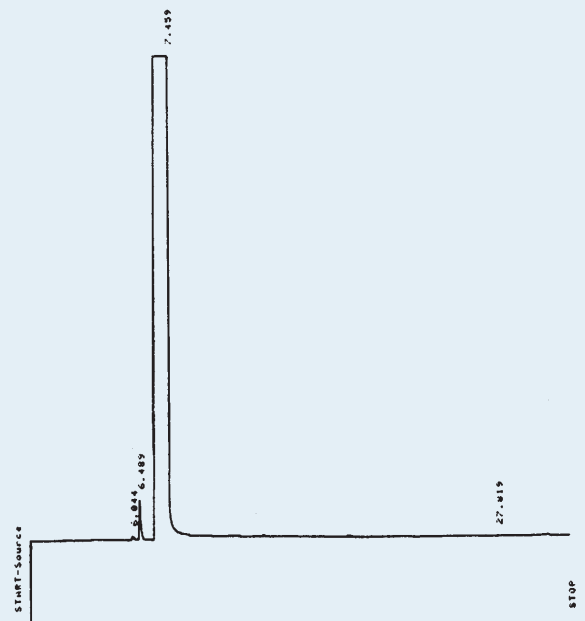
cronus

### Distilled alcohol



cronus

### Rectified alcohol



cronus